

EU Login - European Commission Authentication Service User Guide



EU Login - European Commission Authentication Service

- Available for download
- What is EU Login?
- What is EU Login?
- How to use EU Login?
 - URL
 - The "EU Login" screen
 - Create an "EU Login" account
 - Click the "Create an account" hyperlink
 - Fill in the required details and click "Create an Account"
 - Click the password creation link in your activation e-mail
 - Create your password and "Proceed" to login
 - Sign in to "EU Login"
- Set up Two-factor authentication with the EU Login Mobile app
 - The EU Login Mobile app
 - Initialise the EU Login Mobile App with your mobile device
 - Sign in with an EU Login account using the EU Login Mobile App PIN code
 - Sign in with an EU Login account using the EU Login Mobile App QR code
 - Sign in with an EU Login account using On Mobile authentication
- Set up Two-factor authentication with your mobile phone number
 - Sign in with an EU Login account using Mobile Phone + SMS
- Set up Two-factor authentication with Security Keys and Trusted Platforms
- Manage your EU Login account
 - Access "My Account"
- Help and Frequently asked questions
 - EU Login online help
 - Forgotten password?
 - How to change my password?
 - How to change my email address in EU Login?
 - What to do when the SMS does not arrive?
 - How to delete my EU Login account?

Two Factor Authentication

2-Factor-Authentication is required to access certain European Commission services. For instructions on how to install and set up the EU Login Mobile App see [below](#).

Important

Only one mobile device can be linked to one EU Login account.

Updated verification process for 2-Factor-Authentication

From Monday **22nd September 2022**, two-factor authentication via the **EU Login mobile app** was changed. The mobile app will no longer send push notifications. This means that you will no longer get a notification as a pop-up messages on your device. Instead, you will need to open the **EU Login mobile app** to view and confirm pending login requests.

During the transition period, some iOS users may already need to select the "Pending Authentication Requests" from the app menu.

Information

This page is available in English only.

Available for download

1. PDF version of the guide: [EU Login - European Commission Authentication Service](#)
 2. MS Word version of the guide: [EU Login - European Commission Authentication Service](#)
-

What is EU Login?

The **EU Login** authentication service (previously **ECAS**) is a point for user authentication to a wide range of Commission information systems.

Information

If you already have an ECAS account, you don't have to create a new EU Login account. In EU Login, your credentials and personal data remain unchanged. You can still access the same services and applications as before. You just need to use your e-mail address for [logging in](#).

It is the first step before registering as an organisation or individual when accessing certain IT Tools such as the **Organisation Registration system**, **Application forms**, **Mobility Tool+** or **OEET**.

Every time you want to use a website that requires EU Login authentication, you will automatically be transferred to the EU Login page, where you will be asked to enter your username and password.

Please Note

Depending on the security level required by the application the user is accessing, single-factor (username + password) or multi-factor (username + password + challenge) authentication will have to be provided by the user. Tools such as the Organisation Registration system, Application forms, Mobility Tool+ or OEET will only require single-factor authentication. The access to Erasmus+ & European Solidarity Corps IT Documentation, Sport IT Documentation, ESC IT Documentation and the Project Results platform will require multi-factor authentication. Tools requiring multi-factor authentication will not have the password option available in the **Choose your verification method** drop-down list.

Information

If you are a new user, before you register as an organisation or individual, you must have an **EU Login** account. The account will become inactive after 6 months if not used, but is still accessible and you will be prompted to create a new password should you try to logon after those six months.

What is EU Login?

The **EU Login** authentication service (previously **ECAS**) is a point for user authentication to a wide range of Commission information systems.

Information

If you already have an ECAS account, you don't have to create a new EU Login account. In EU Login, your credentials and personal data remain unchanged. You can still access the same services and applications as before. You just need to use your e-mail address for [logging in](#).

It is the first step before registering as an organisation or individual when accessing certain IT Tools such as the **Organisation Registration system, Application forms, Mobility Tool+, Beneficiary module, OEET or Assessment module**.

Every time you want to use a website that requires EU Login authentication, you will automatically be transferred to the EU Login page, where you will be asked to enter your username and password.

Please note: Depending on the security level required by the application the user is accessing, single-factor (username + password) or multi-factor (username + password + challenge) authentication will have to be provided by the user. Tools such as the Organisation Registration system, Application forms, Mobility Tool+, Beneficiary module, OEET or Assessment module will only require single-factor authentication. The access to the Project Results platform will require multi-factor authentication.

Tools requiring multi-factor authentication will not have the password option available in the **Choose your verification method** drop-down list.

Information

If you are a new user, before you register as an organisation or individual, you must have an **EU Login** account. The account will become inactive after 6 months if not used, but is still accessible and you will be prompted to create a new password should you try to logon after those six months.

How to use EU Login?

URL

If you do not yet have an EU Login account, you need to create an account by using the following link <https://webgate.ec.europa.eu/cas/eim/external/register.cgi>

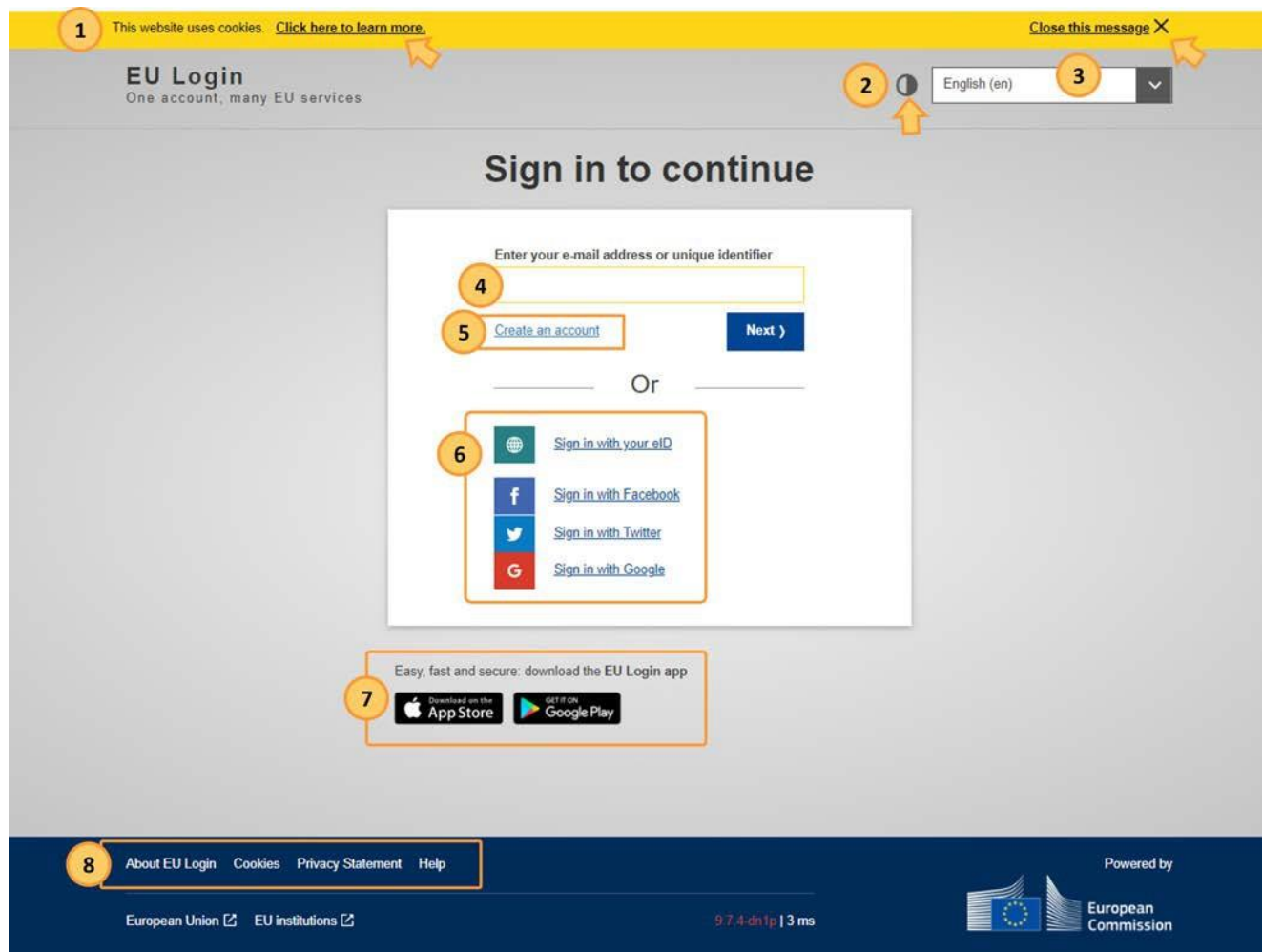
If you already have a user account for EU Login please login via <https://webgate.ec.europa.eu/cas/login>

The "EU Login" screen

1. Closable **Cookies notification**: EU Login uses cookies to allow you to log in to different applications without re-entering your e-mail address and password each time. Once you have logged into EU Login you will **not** have to identify yourself again as long as you leave your browser open. If you have chosen the option to not to accept such cookies, you will not benefit from this feature. The cookies are 'per-session' cookies, i.e. they are removed when you close your browser.
2. Change **Contrast** option: Allows you to change the display of the EU Login screens to a high contrast version.
3. **Language Selector**: The EU Login screens are offered in all official languages of the EU. Use the drop-down menu in order to switch between languages.
4. If you already have an EU Login account, use your **e-mail address to sign in**.
5. If you don't have an account yet, you can create one by clicking on the **Create an account** hyperlink.
6. The EU Login offers the possibility to **authenticate using a social media** (Facebook, Twitter and Google) in order to access European Commission applications without having to create a specific EU Login account. This option is only available for external users and is **not yet enabled for all applications open to the public**.
7. If you wish to link your eID (eletronic ID) to your EU Login account, click on the **Select your country** button.
8. Access to download and install the **EU Login app** for your mobile devices.
9. Links to **About EU Login**, **Cookies** policy, **Privacy Statement**, **Contact** information and **Help**.

Take note




IT tools that are used in the **Erasmus+ and European Solidarity Corps** programmes **do not support the authentication via social media and do not support the authentication using eID**.



The screenshot shows the EU Login interface with the following numbered callouts:

- 1**: A yellow banner at the top left stating "This website uses cookies" with a link to "Click here to learn more" and a "Close this message" button at the top right.
- 2**: A contrast icon (an eye) next to the language selector.
- 3**: The language selector dropdown menu showing "English (en)".
- 4**: The input field for "Enter your e-mail address or unique identifier".
- 5**: The "Create an account" and "Next" buttons.
- 6**: The social media authentication options: "Sign in with your eID", "Sign in with Facebook", "Sign in with Twitter", and "Sign in with Google".
- 7**: A banner at the bottom promoting the EU Login app, with "Download on the App Store" and "GET IT ON Google Play" buttons.
- 8**: The footer navigation links: "About EU Login", "Cookies", "Privacy Statement", and "Help".

At the bottom of the page, there is a footer with the following information:

- European Union  EU institutions 
- 9 7 4 - dn1p | 3 ms
- Powered by  European Commission

Create an "EU Login" account

Click the "Create an account" hyperlink

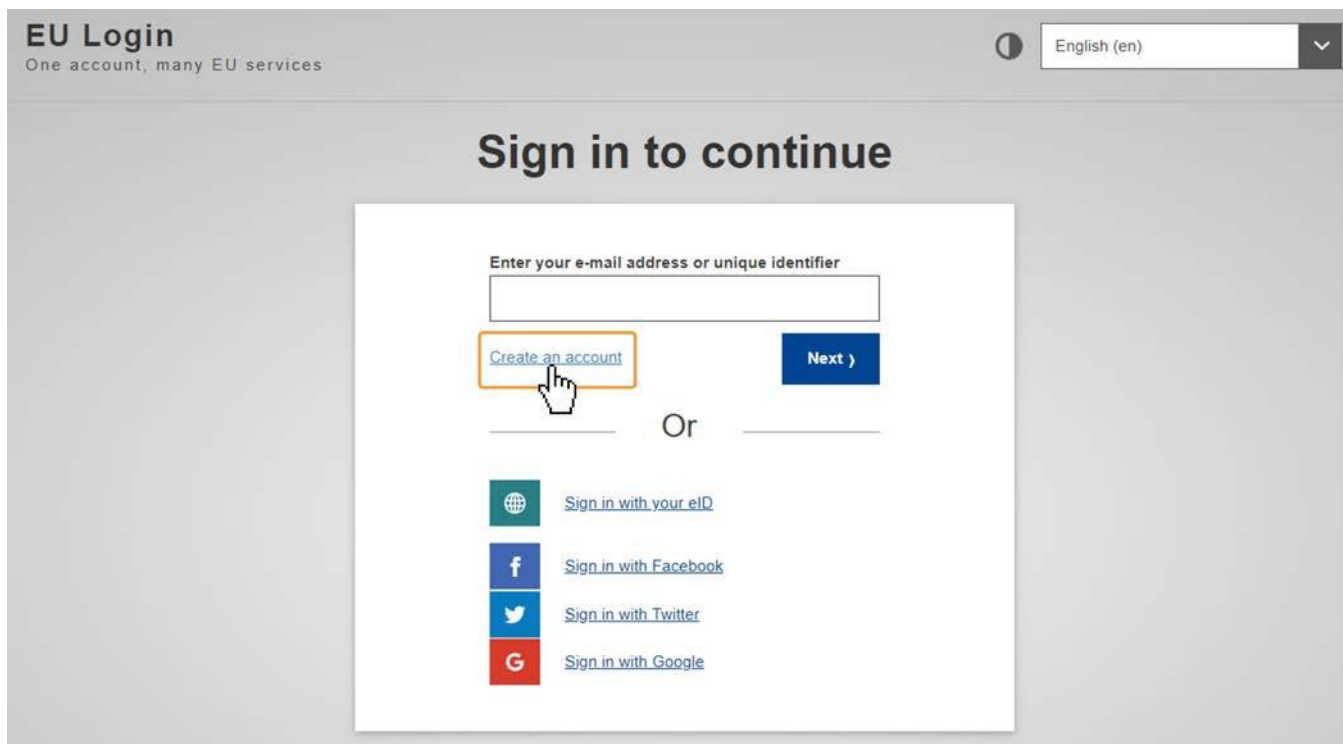
In order to create a new account, click on the **Create an account** hyperlink.

Information

If you already have an ECAS account, you don't have to create a new EU Login account. In EU Login, your credentials and personal data remained unchanged. You can still access the same services and applications as before. You just need to use your e-mail address and password to log in.

Tip

If you are not sure if you already had an ECAS or have an EU Login account, provide your e-mail address and click on next. If the e-mail you provided is not yet registered, you will be redirected to register with EU Login automatically.



Fill in the required details and click "Create an Account"

In the **Create an account** screen, provide the following details:

1. **First name:** Your first name.
2. **Last name:** Your last name.
3. **E-mail:** Your e-mail address. Please remember this must be the same e-mail address provided to the National Agency or DG EAC, where applicable, and it should be valid and active.
4. **Confirm e-mail:** Confirm the e-mail address.
5. **E-mail language:** Choose the language for notification e-mails from the drop-down menu.
6. **Privacy Statement check-box:** Tick the checkbox confirming the privacy statement.
7. **Create an account button:** Once you have filled in all details, click on the **Create an account** button.

Create an account

[Help for external users](#)

First name
1

Last name
2

E-mail
3

Confirm e-mail
4

E-mail language
5 English (en) ▼

By checking this box, you acknowledge that you have read and understood the [privacy statement](#) 6

Create an account Cancel

➔

Create an account

[Help for external users](#)

First name

Last name

E-mail

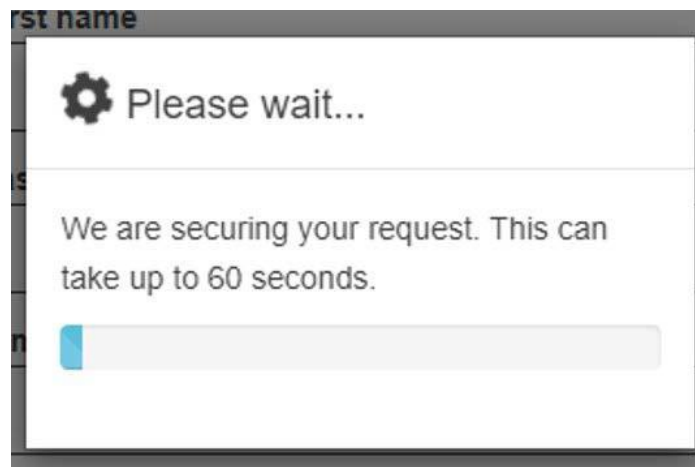
Confirm e-mail

E-mail language
English (en) ▼

By checking this box, you acknowledge that you have read and understood the [privacy statement](#)

7 Create an account Cancel

A notification displays, informing you that the request is ongoing.



A notification confirming the registration displays. An e-mail is sent to the e-mail address you provided in order to verify that you have access to it. If you cannot find the e-mail in your inbox, please check your spam or junk folder.

Create an account

Thank you for registering, you will receive an e-mail allowing you to complete the registration process.

Click the password creation link in your activation e-mail

Once you have registered, you will receive an e-mail with your **username** and a link for creating your **EU Login password**. Click on the link to create the password in the e-mail.

Take note

It may take up to 5 minutes after reception of this mail before the site will recognise your registration.

You have a **maximum of 24 hours**, starting from the time that the message was sent, to create the password. You are advised to do so immediately, if possible. If you do not react within the 24 hours, you can make another request by following the same link. You will need to provide your e-mail address again and confirm your request.

Authentication Service <automated-notifications@nomail.ec.europa.eu>
aan Anna ▾

12:49 (0 minuten geleden) ☆ ↶ ⋮

Dear Anna Name,

You have been registered in EU Login.

Your email address is anna.name@nomail.com

To create your password, follow the link below:

[this link](#)

You have a maximum of 24 hr, starting from the time that this message was sent, to create your password, but you are encouraged to do so immediately if possible. After this time, you can make another request by following the same link: you will then need to re-enter your username and confirm your request.

If the above link does not work, you can copy the following address (make sure the complete address is copied!) and paste it into your browser's address bar:

https://webgate.ec.europa.eu/cas/init/initialisePasswordLogin.cgi?wayf_domain=external&wayf_remember=checked&wayf_submit=Select&uid=n00dmxta&resetCode=TYzQyMjF6yoBHA5omRRdNKl0V6bWpX53ludnJikNm27


Instead of replying to this message, if you have a problem, please follow the help or contact information on the site where you were trying to register.

Note that it may take up to 5 minutes after reception of this mail before the above-mentioned site will recognize your registration.

Sent to you by EU Login

Create your password and "Proceed" to login

Once you click on the link, the EU login screen opens in your browser, asking you to create your password.

 Your automatically created **user ID** is displayed. This user ID is unique for your account and can be used instead of the e-mail address when logging in to EU Login.

Enter and confirm your **password**. Select a password as long and as complex as you can in order to make your account more secure. Click on the **Submit** button.


Information

Remember that the password:

- must be at least 10 characters long,
- may not contain your username (login) or any part of your full name,
- must be changed every 3 months (a reminder is automatically sent 15 days before the expiry date)
- should never be the same as any of your last 5 passwords.

New password

Please choose your new password.

n00dmwxe
(External) 

New password

Confirm new password

Submit

Passwords cannot include your username and must contain at least 10 characters chosen from at least three of the following four character groups (white space permitted):

- Upper Case: A to Z
- Lower Case: a to z
- Numeric: 0 to 9
- Special Characters: !"#%&'()*+,-./:;<=>?@[\]^_`{|}~

Examples: YxgT(j'6Gi fHAjMnM}ck ZThnbgff#

[\[Generate other sample passwords\]](#)


New password

Please choose your new password.

n00dmwxe
(External)

New password

Confirm new password

Submit 

Passwords cannot include your username and must contain at least 10 characters chosen from at least three of the following four character groups (white space permitted):


- Upper Case: A to Z
- Lower Case: a to z
- Numeric: 0 to 9
- Special Characters: !"#%&'()*+,-./:;<=>?@[\]^_`{|}~


Examples: YxgT(j'6Gi fHAjMnM}ck ZThnbgff#

[\[Generate other sample passwords\]](#)

Click on the **Proceed** button in the confirmation in order to finalise the log in to EU Login.


New password


 Your EU Login password was successfully changed.

Proceed 


A new screen will open informing you about your successful login to EU Login. Your first and last name are displayed in the top right corner of the screen.

EU Login
One account, many EU services

English (en) 

Anna NAME 

Successful login

 You are now logged in to EU Login.

To stop the automatic single sign-on, click [Logout](#) or close all browser windows.

Sign in to "EU Login"

Once you have created an EU Login account, you can use it to access a multitude of services. While accessing these services, the EU Login screen will display whenever authentication is needed.

Sign in with e-mail and password

1. Enter your **e-mail address** and click **Next**. The e-mail must be the same provided while creating the EU Login account. Alternatively, you can also use your user ID.
2. **Enter** your EU Login **password**. By default, the verification method **Password** is selected and must be used. If the password option is not available in the drop-down list, the tool requires two-factor authentication.
3. Click **Sign In**.
4. After successful login, a **Confirmation message** displays.

A success message displays and you are signed in to EU Login. Your first and last name are displayed in the top right corner of the screen.

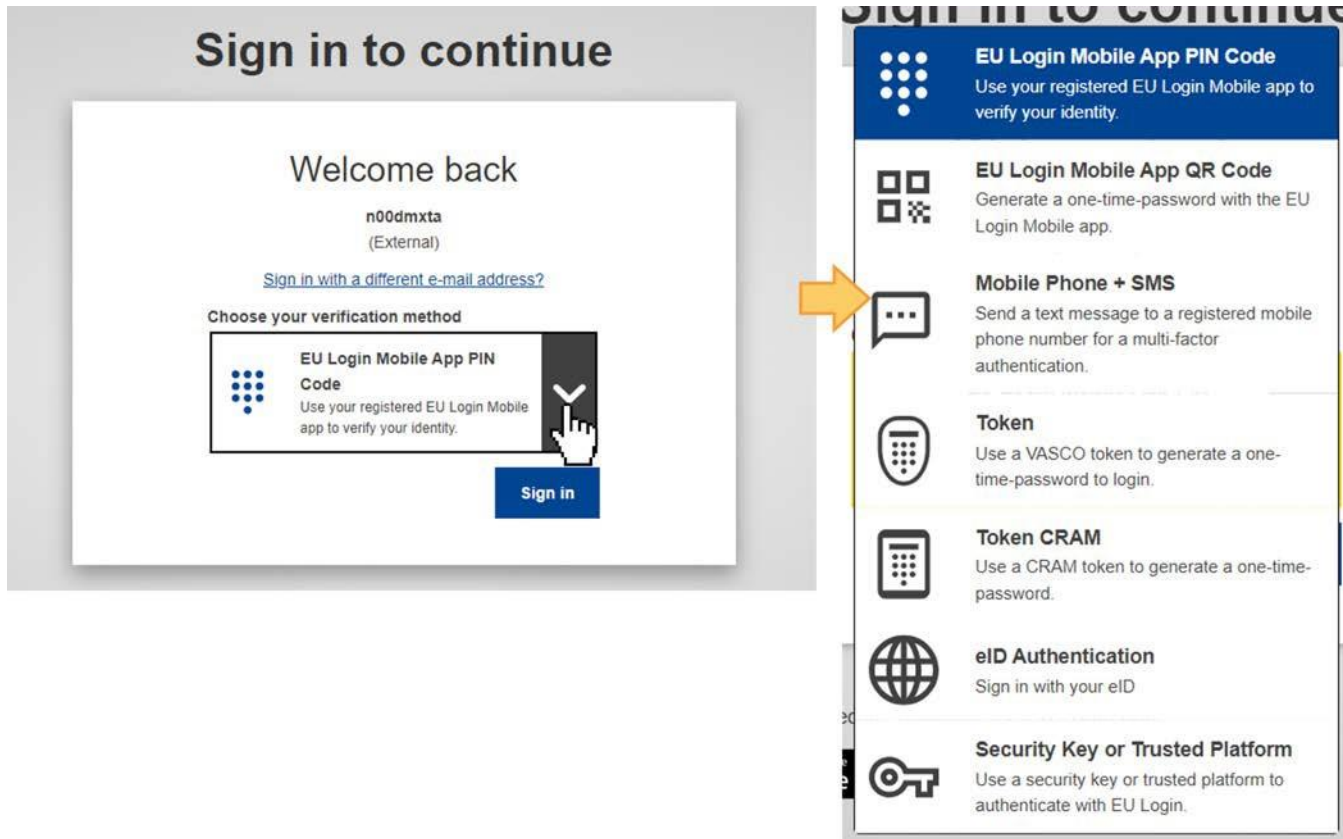
Set up Two-factor authentication with the EU Login Mobile app

Depending on the security level required by the application you are accessing, single factor (e-mail + password) or two-factor authentication (username + password + challenge) will have to be provided. If two-factor authentication is required you need an additional verification method besides the password.

It is therefore recommended to set up the two-factor authentication as soon as you have created your EU Login account. One option to use two-factor authentication is the **EU Login Mobile app**. It is also possible to register your mobile number with EU Login to use two-factor authentication with Mobile Phone + SMS.

Tools requiring two-factor authentication will not have the password option available in the **Choose your verification method** drop-down list. By default, **EU Login Mobile App PIN Code** is selected as verification method.

You can use the drop-down list and select the option you want to use.



The EU Login Mobile app

The **EU Login Mobile App** can be used when accessing a service that requires increased security. The EU Login Mobile App is free and can be downloaded from the Google Play Store (Android), the App Store (iOS) or the Windows Store (Windows Phone). The direct links are available on the EU Login screen.



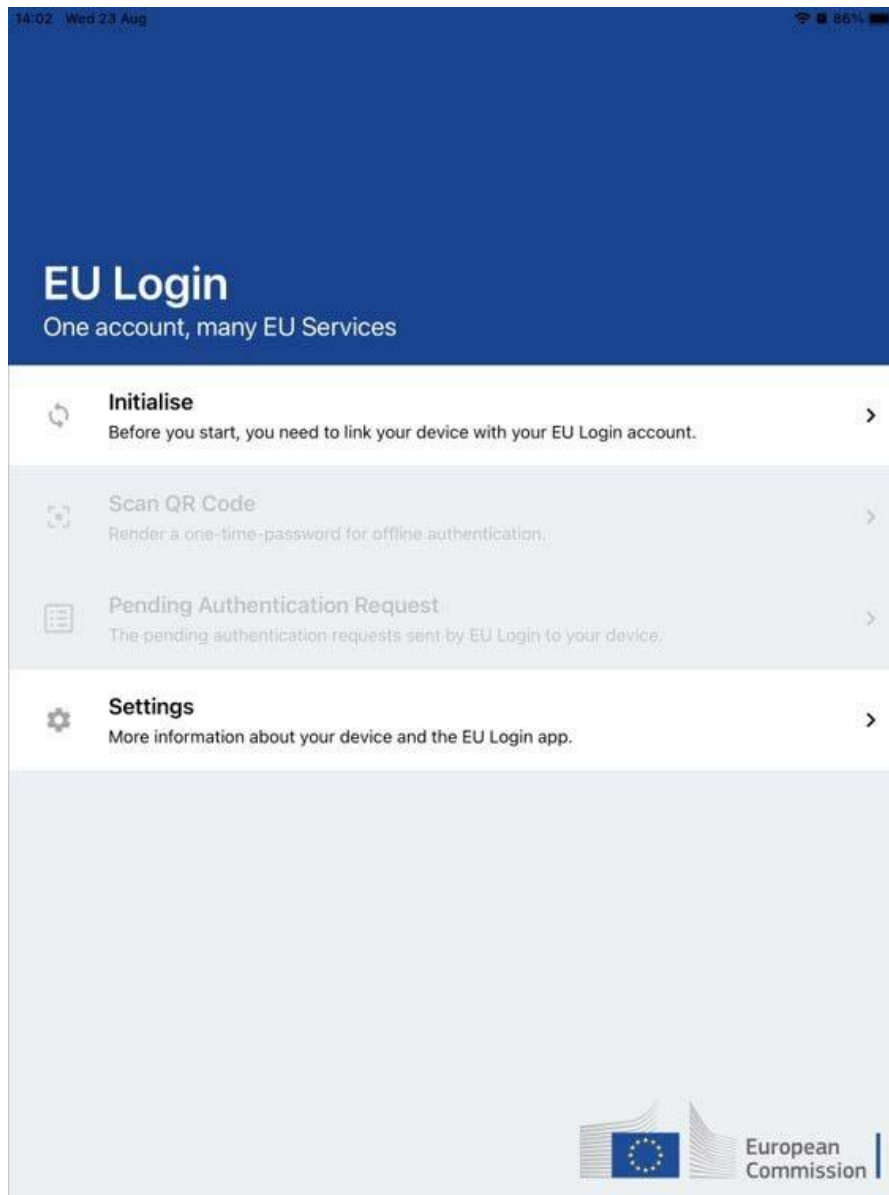
Please note

EU Login can only be installed on a mobile device with a working camera.

After installing it, you need to initialise it. In order to do so, you need a PC in addition to your mobile device.

The EU Login Mobile app offers a variety of options to log in once activated, such as:

1. **EU Login Mobile App PIN code** - If the mobile device where your EU Login Mobile App is installed has internet connectivity then you can use the EU Login Mobile App PIN Code verification method.
2. **EU Login Mobile App QR code** - If the mobile device where your EU Login Mobile App is installed does not have internet connectivity then you can use the EU Login Mobile App QR Code verification method.
3. **On mobile authentication** - If you are navigating on the same mobile device as the one where the EU Login Mobile App is installed you can use the On Mobile verification method.



The above methods can be used without compelling the user to expose a mobile phone number. Alternatively, you can also use Mobile phone + SMS as two-factor authentication method to log in to the Commission IT systems and services with EU Login. To use this method you must have your mobile number associated with your EU Login account.

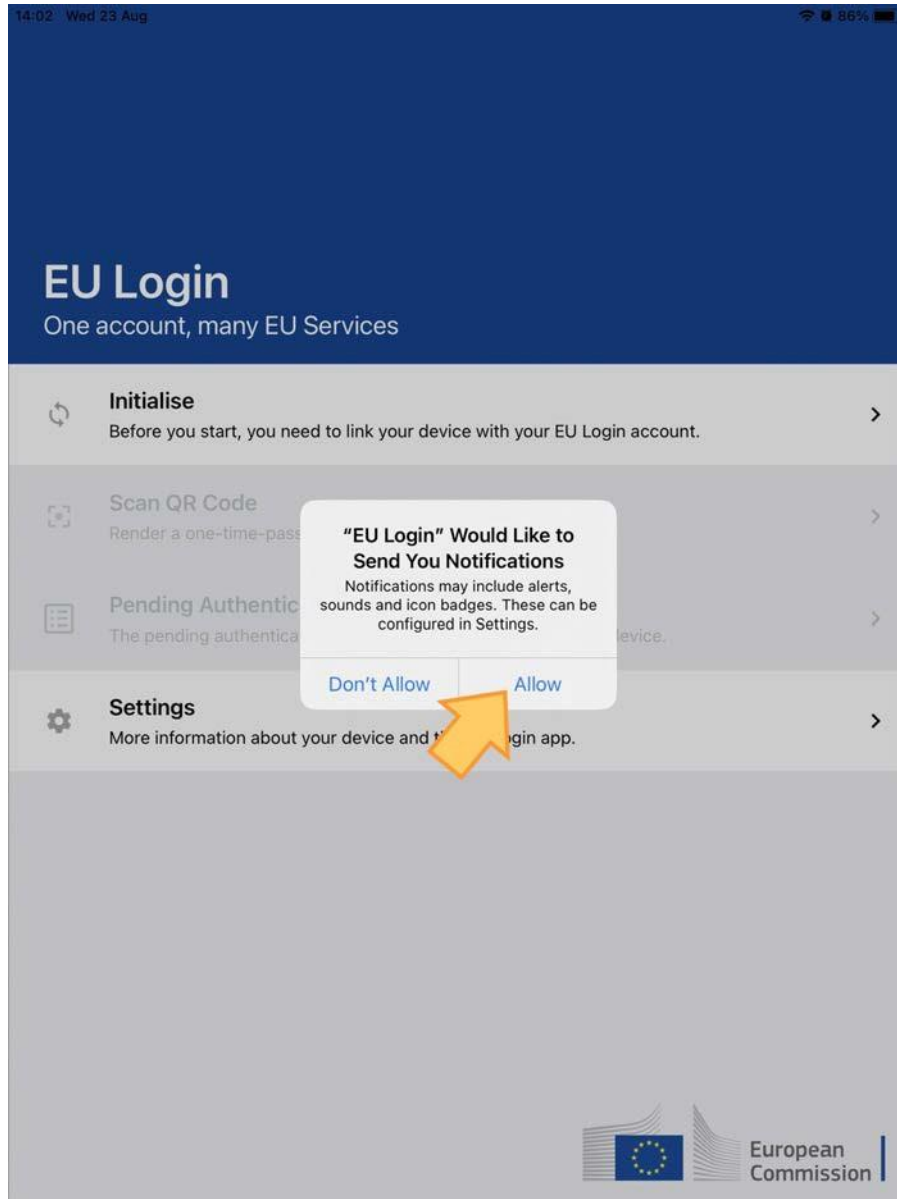
Initialise the EU Login Mobile App with your mobile device

To initialise the EU Login Mobile App you need your mobile device and a computer. Download the app on your mobile device.

When opening the app you will be asked to allow notifications.

Important

You must allow notifications, otherwise you will not be able to use the app.



On your PC, log in to [EU Login](#) using your e-mail address and password.

Take note

If you already installed and initialised the EU Login Mobile App on another device or if you registered your mobile phone number for receiving SMS, you are requested to authenticate again using the already registered device or phone number.

To access your EU Login account details, click on the settings (gear) icon in the upper right corner and click on My Account.

EU Login
One account, many EU services

English (en)

Anna NAME

Successful login

! You are now logged in to EU Login.
To stop the automatic single sign-on, click [Logout](#) or close all browser windows.

(External)

[Change password](#)

[My Account](#)

[Logout](#)

The My Account page opens. Select **Manage my mobile devices**.

My Account

My account details

Configure my account

Delete my account

Manage my mobile devices

Manage my Security Keys and Trusted Platforms

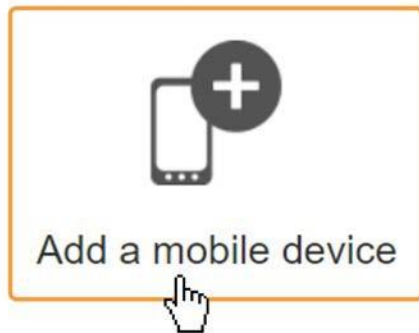
Manage my mobile phone numbers

Manage my eIDs

Display my sessions
You can view the sessions opened for visited applications.

Click on **Add a mobile device**.

Manage my mobile devices



Fill in the required information in the **Add a mobile device** screen. You have to provide a **name (1)** for your device and set up a **4 digit PIN (2)** code.

You can pick any name that suits you, such as "My tablet", "My Phone" or "My blue phone". You will be prompted to provide the PIN code when authenticating so make sure you select one that you can easily remember. However, avoid PIN codes that can be easily guessed, such as your birth year or birthday and month.

Click on the **Submit** button.

Add a mobile device

Please give a name to identify your mobile device and a PIN code to use for it.

Your device name 1

Your 4 digit PIN code 2

You will be required to enter this PIN code on your mobile device to use the EU Login mobile app.

Confirm your PIN code 2

Submit
Cancel

➔

Add a mobile device

Please give a name to identify your mobile device and a PIN code to use for it.

Your device name

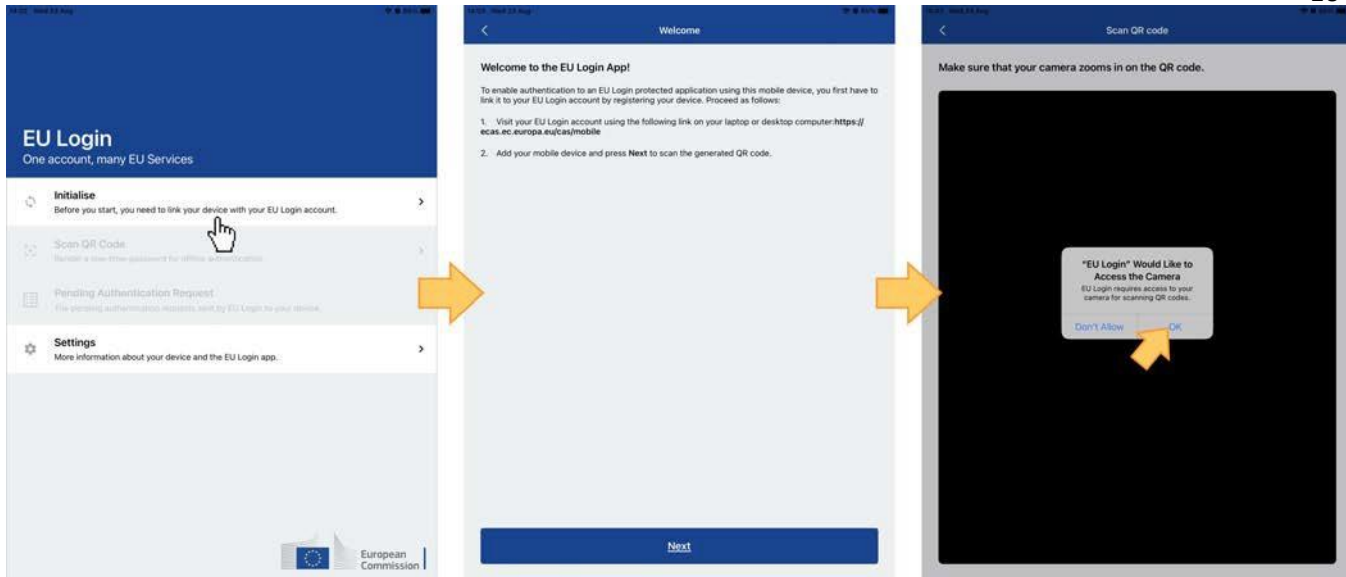
Your 4 digit PIN code

You will be required to enter this PIN code on your mobile device to use the EU Login mobile app.

Confirm your PIN code

Submit
Cancel

On your mobile device, open the EU Login Mobile App and select the **Initialise** option. Follow the instructions on screen and allow access to your camera.

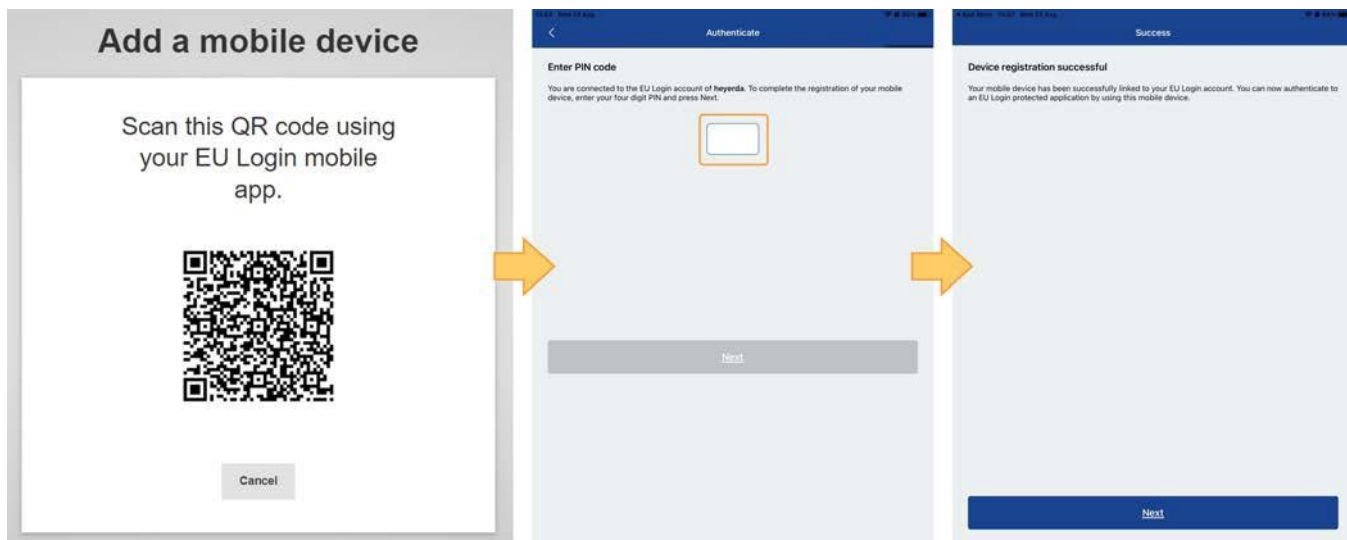


The **QR code scanner** starts on your mobile device and a **QR code** is displayed on the screen of your PC. Point the camera of your mobile phone to your PC screen until the QR code is recognised. In the Authenticate screen in the app, enter the **4 digit PIN** code you set up earlier and click on **Authenticate**.

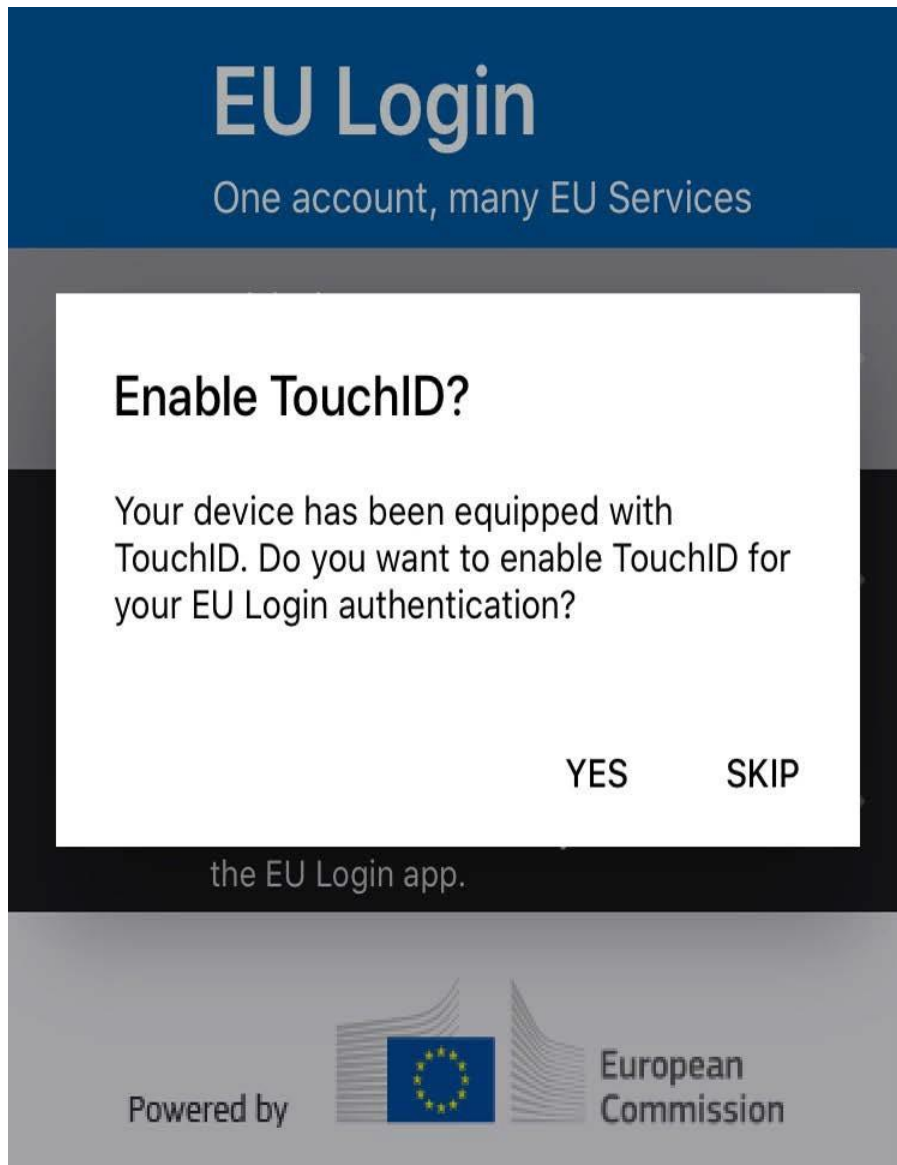
A success message displays on your device, confirming the setup of your mobile device with EU Login. Your EU Login Mobile app is successfully initialised and can be used for authenticating. Click on **Next** to be redirected to the Welcome screen.

You can now use your mobile device to access the European Commission services that require two-factor authentication, either by using the 4 digit PIN or by scanning a QR code.

An e-mail is sent to your registered e-mail account informing you that a new mobile device has been added to your EU Login account.



If your device is equipped with Fingerprint recognition (TouchID), an automatic pop up will be displayed to Enable Fingerprint recognition. You can enable this function by clicking on YES. If you do not want to enable Fingerprint recognition, click on SKIP.



Once a mobile device has been added to your EU Login account, you have the options to **Delete a mobile device (1)** and to **Change EU Login add PIN code (2)** when accessing the **Manage my mobile devices** option when signed in to EU Login > My Account.

Manage my mobile devices



Add a mobile device



Delete a mobile device



Change EU Login app
PIN code

[← My Account](#)

Updated verification process for 2 factor authentication

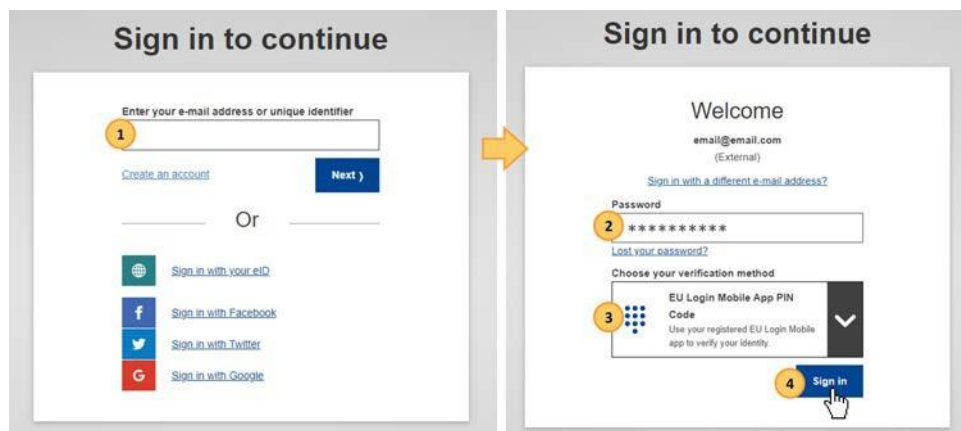
From Monday 22nd September 2022, two-factor authentication via the EU Login Mobile app was changed. The mobile app will no longer send push notifications. This means that you will no longer get a notification as a pop-up messages on your device. Instead, you will need to open the EU Login Mobile app to view and confirm pending login requests.

Sign in with an EU Login account using the EU Login Mobile App PIN code

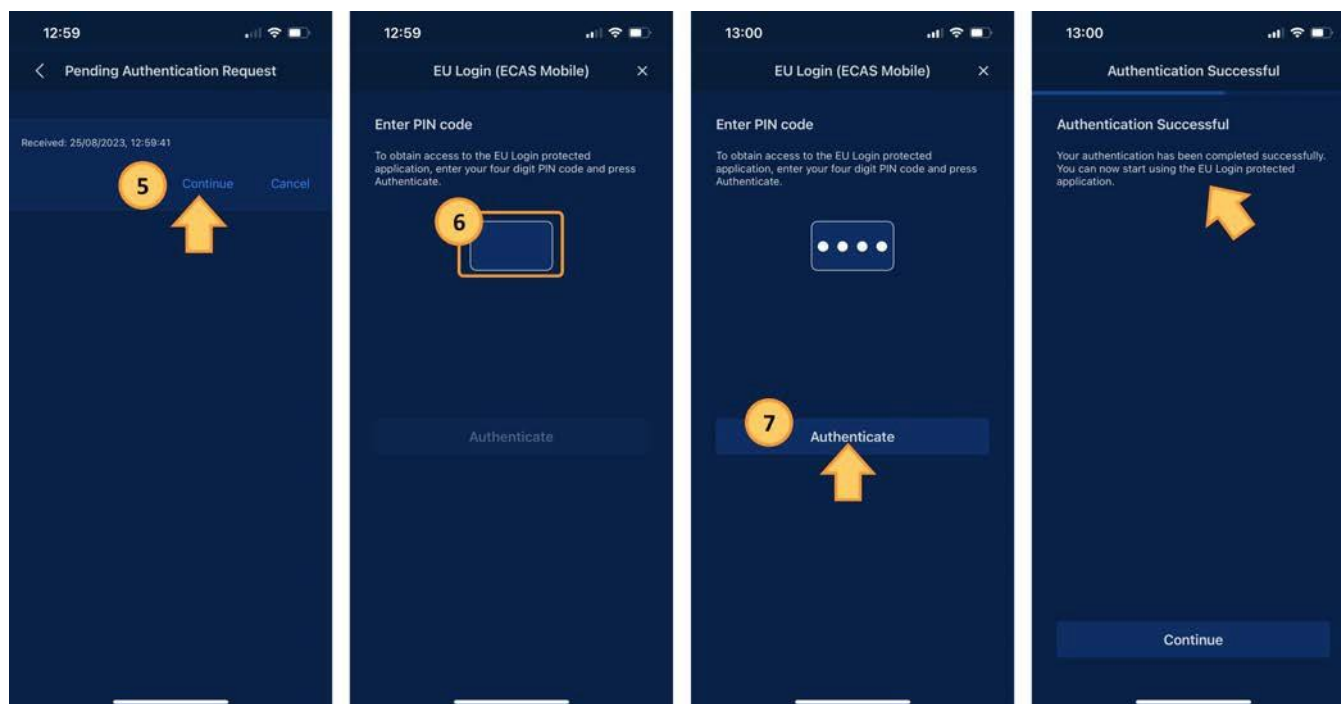
Tools requiring two-factor authentication will not have the password option available in the **Choose your verification method** drop-down list. Where available and if the EU Login Mobile app is installed and initialised on your mobile device, you can use **EU Login Mobile App PIN code** as verification.

1. Enter your **e-mail address** or user ID and click **Next**.
2. Select **EU Login Mobile App PIN Code** as the verification method.
3. Enter your password in the **Password** field.
4. Click on **Sign in**.

 If you have more than one device with an initialised EU Login Mobile App, you are asked to select the one you would like to use. This screen does not display if you have only initialised one device. Click on the device displaying the name you provided.



5. Open the **EU Login Mobile App** on your mobile device. The **Pending Authentication Requests** screen opens.
6. The EU Login Mobile App prompts you to enter your **PIN code**.
7. Enter your PIN code and tap on **Authenticate**. This automatically completes the login process on your PC. You will be redirected to the service you requested to use.



Sign in with an EU Login account using the EU Login Mobile App QR code

Tools requiring two-factor authentication will not have the password option available in the **Choose your verification method** drop-down list. Where available and if the EU Login Mobile app is installed and initialised on your mobile device, you can use **EU Login Mobile App QR code** as verification.

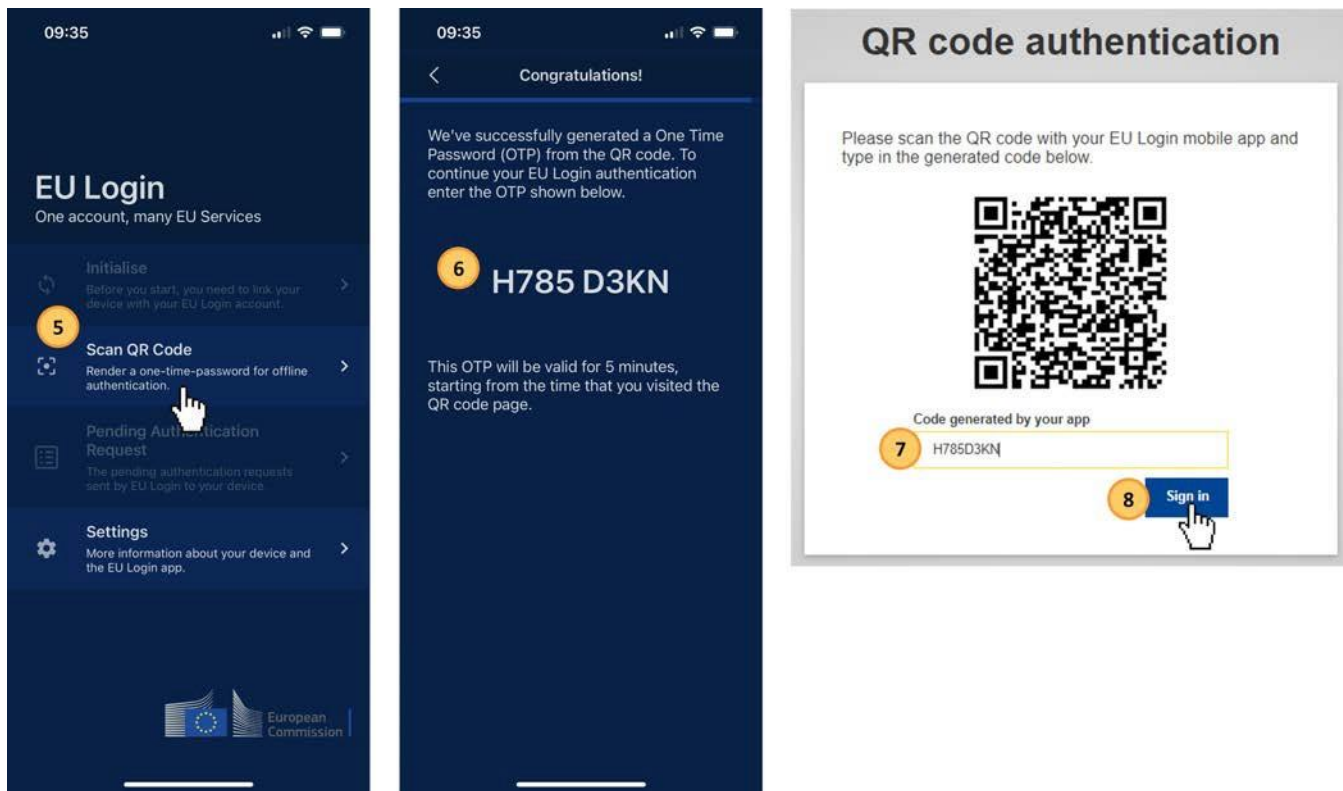
1. Enter your **e-mail address** or user ID and click **Next**.
2. Select **EU Login Mobile App QR Code** as the verification method.
3. Enter your password in the **Password** field and click on **Sign in**.

4. A **QR code** is displayed on screen.



5. Start the **EU Login Mobile App** on the mobile device where it has been previously initialised. Tap on **Scan QR Code**. The QR code scanner starts on your mobile device. Point the camera of your mobile phone to your PC screen until the QR code is recognised.
6. The EU Login Mobile App displays a **one-time password** composed of digits and characters.
7. Type the one-time password in the **code generated by your app** field on your PC.
8. Click **Sign in** to proceed.

This automatically completes the login process on your PC. You will be redirected to the service you requested to use.



Sign in with an EU Login account using On Mobile authentication

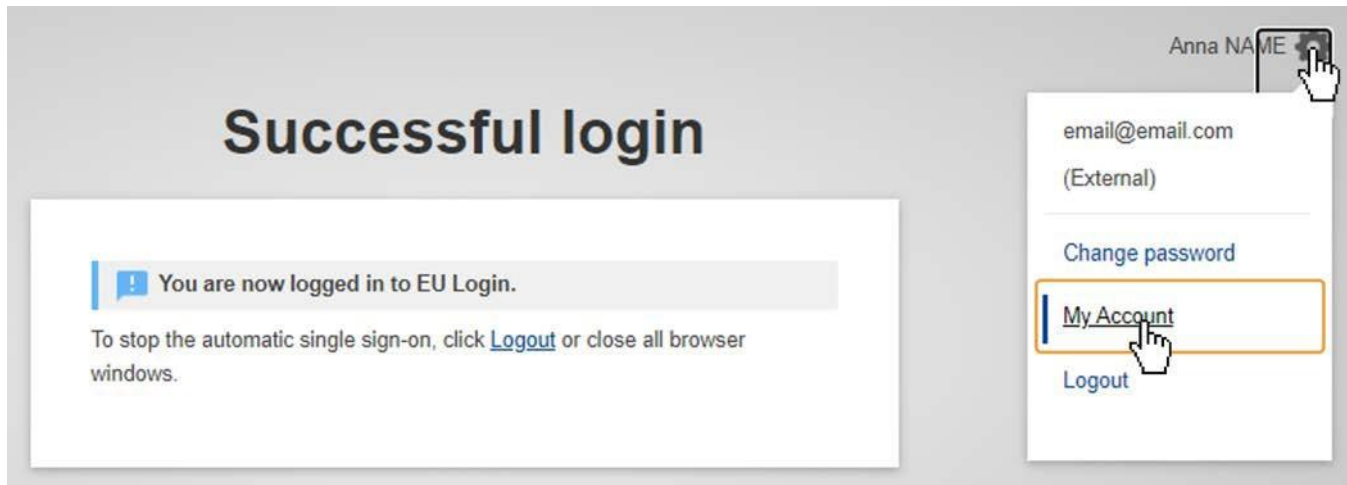
The **On Mobile verification** method is only available when browsing on a mobile device and should only be used if an EU Login Mobile App has been previously installed and initialised on that same device.

1. Enter your **e-mail address** or user ID and click **Next**.
2. In the EU Login Mobile app, select **On Mobile Authentication** as the verification method and tap on **Sign in**.
3. The **EU Login Mobile App** opens automatically and prompts you to enter your **PIN code**.
4. Enter your **PIN code** and tap on **Authenticate**.
5. If the app is active (in the foreground), it will automatically redirect you to the browser selector.
6. If the app is in the background, a notification is displayed on your device. Please accept this notification to be redirected successfully.
7. You are now successfully authenticated.

- Click on **Default browser** to be redirected to your application. This step is only needed for IOS users.

Set up Two-factor authentication with your mobile phone number

Log in to EU Login with your e-mail address and password. To access your EU Login account details, click on the settings (gear) icon in the upper right corner and click on **My Account**.



1. Click on **Manage my mobile phone numbers**
2. Click on **Add a mobile phone number**.
3. **Provide your number** and click on **Add**. After your number is added, a challenge code is sent via SMS to your mobile number.



4. Enter this code in the **Text message challenge code** fields and click on **Finalise**.

Your mobile number is now added to your account and can be used to log in to EU Login, if two-factor authentication is required.

Take note

If you have already installed and initialised the EU Login Mobile App on a device or if you have registered a different mobile phone number for receiving SMS in EU Login, you are requested to authenticate using the already registered device or phone number.



Sign in with an EU Login account using Mobile Phone + SMS

Tools requiring two-factor authentication will not have the password option available in the **Choose your verification method** drop-down list.

1. Enter your **e-mail address** or user ID and click **Next**.
2. Select **Mobile Phone + SMS** as the verification method.
3. Enter your **password** in the Password field.
4. Enter your/a with EU Login registered mobile phone number in the Mobile phone field, starting with a plus sign and with the country code. Do not include dots, parenthesis or hyphens.
5. When clicking **Sign in**, an SMS is sent to your mobile device. The SMS contains a **challenge code** made of nine characters separated with hyphens (minus sign).
6. Type the challenge you received in the **SMS text challenge** fields.

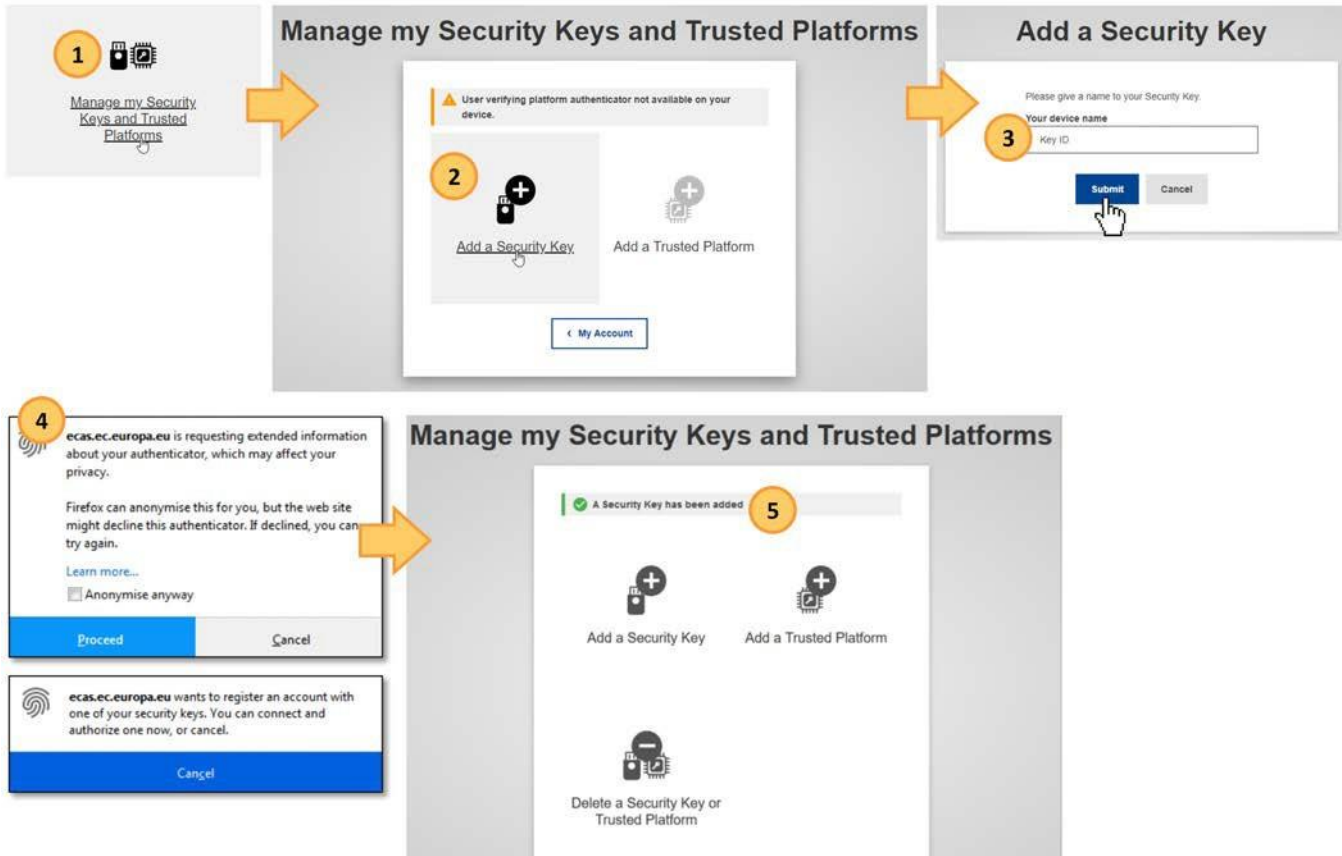
7. Click on **Sign in** to proceed to the service you requested to use.

Set up Two-factor authentication with Security Keys and Trusted Platforms

This feature enables you to manage the Key-ID tokens and trusted platforms you use for two-factor authentication. The Security Key and Trusted Platform (TPM) options must be configured on your device before being registered into your EU Login account. Please refer to your device user guide to first set up your Security Key or TPM.

Insert the security key into your device.

1. Click on **Manage my Security Keys and Trusted Platforms**. You may need to authenticate with a stronger authentication method.
2. Click on **Add a Security Key** or **Add a Trusted Platform**.
3. Enter a **device name** and click on **Submit**.
4. A message will pop up: **Credential registration in progress**. Your browser will open a popup window to request access to extended information about your authenticator.
5. Click on **Proceed**. Please **do not tick the Anonymise anyway checkbox**, otherwise it will not be possible to use this authentication method. **Validate the fingerprint** on your security key.
6. You will then see a success message: **A security key has been added**.



Manage your EU Login account

Access "My Account"

Log in to EU Login with your e-mail address and password. To access your EU Login account details, click on the settings (gear) icon in the upper right corner and click on **My Account**.

Successful login

You are now logged in to EU Login.

To stop the automatic single sign-on, click [Logout](#) or close all browser windows.

Anna NAME

email@email.com
(External)

[Change password](#)

[My Account](#)

[Logout](#)

The **My Account** page opens. Here you can choose a number of options to edit your account details.


My account details

Username	n00dmwx
Domain	External
Unique identifier at the Commission (uid)	n00dmwx
Most recent login	28/08/2023 10:37 GMT+02:00
Previous login	28/08/2023 10:24 GMT+02:00
Account created	23/08/2023 11:44 GMT+02:00
Name	Name Anna
Email preferred language	nl
E-mail	email@email.com
Password last changed	23/08/2023 11:45 GMT+02:00
Password expires (as defined by the policy currently in force)	19/02/2024 10:45 GMT+01:00
Password last reset	23/08/2023 11:45 GMT+02:00
Password reset last requested	
Number of good logins	4
Number of bad logins	2
Last unlock time	
Last authentication failure	28/08/2023 10:24 GMT+02:00
Group Membership(s)	AIDA_SELFRG
List of Federated IDs	

[← My Account](#)

My account details

Under **My account details** you find general information about your EU login, such as Username, Unique identifier (uid), Most recent login, Last password reset and more. All information here is read only.



[My account details](#)

My account details

Username	n00dmwxre
Domain	External
Unique identifier at the Commission (uid)	n00dmwxre
Most recent login	28/08/2023 10:37 GMT+02:00
Previous login	28/08/2023 10:24 GMT+02:00
Account created	23/08/2023 11:44 GMT+02:00
Name	Name Anna
Email preferred language	nl
E-mail	email@email.com
Password last changed	23/08/2023 11:45 GMT+02:00
Password expires (as defined by the policy currently in force)	19/02/2024 10:45 GMT+01:00
Password last reset	23/08/2023 11:45 GMT+02:00
Password reset last requested	
Number of good logins	4
Number of bad logins	2
Last unlock time	
Last authentication failure	28/08/2023 10:24 GMT+02:00
Group Membership(s)	AIDA_SELFRG

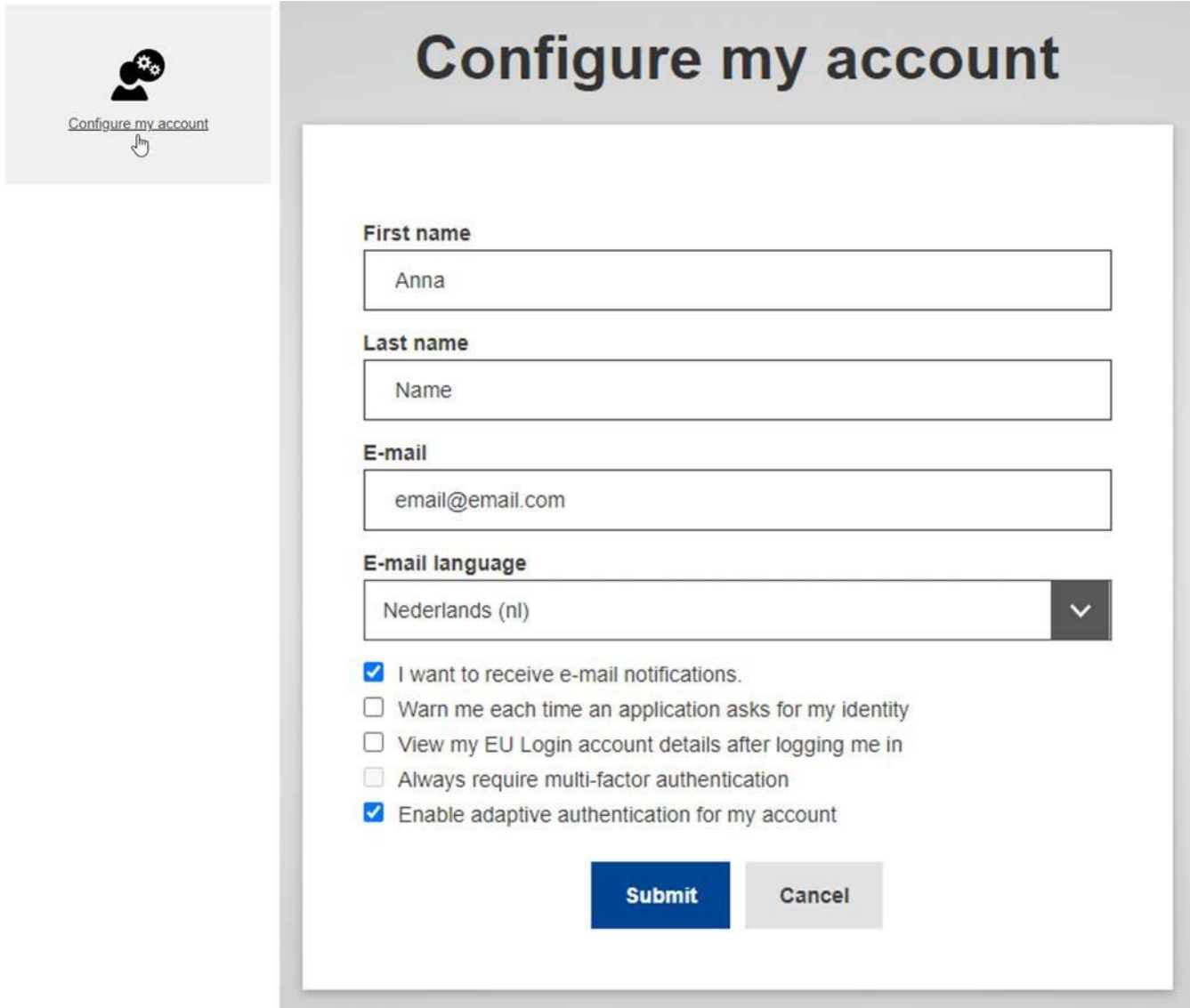
List of Federated IDs

[← My Account](#)

Configure my account

Click on **Configure my account** to edit your personal details. Here you can update your personal information, e-mail address and e-mail language as well as e-mail notification settings.

Should you change your e-mail address, please remember to inform your National Agency, DG EAC or the person responsible for providing you access to certain DG EAC IT Tools.



Configure my account

First name

Last name

E-mail

E-mail language

I want to receive e-mail notifications.

Warn me each time an application asks for my identity

View my EU Login account details after logging me in

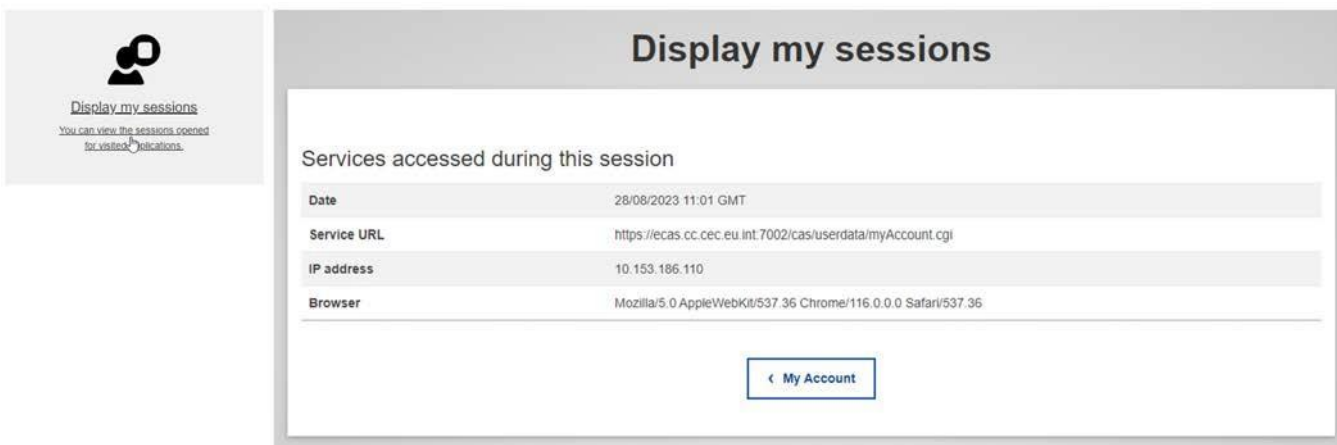
Always require multi-factor authentication

Enable adaptive authentication for my account

Submit **Cancel**

Display my sessions

To see the number of services accessed during your current session, click on **Display my sessions**.



Display my sessions

Services accessed during this session

Date	28/08/2023 11:01 GMT
Service URL	https://ecas.cc.cec.eu.int:7002/cas/userdata/myAccount.cgi
IP address	10.153.186.110
Browser	Mozilla/5.0 AppleWebKit/537.36 Chrome/116.0.0.0 Safari/537.36

[< My Account](#)

Link eID

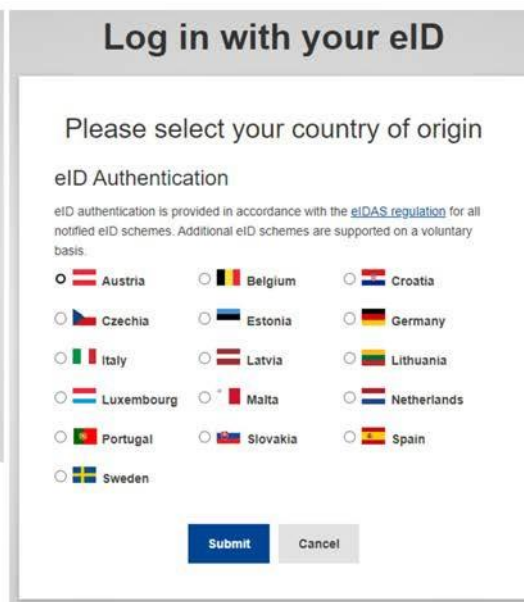
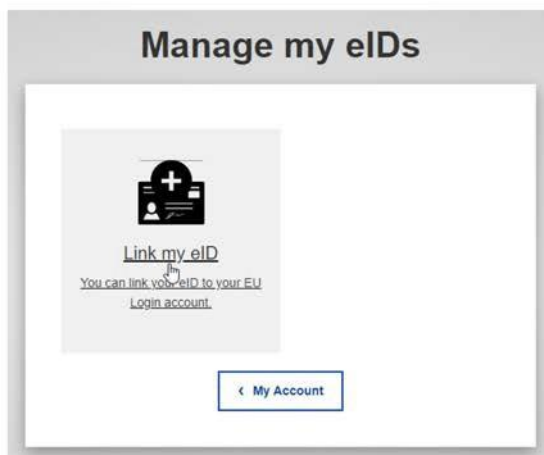
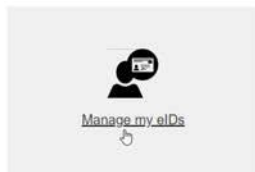
To link your eID (electronic ID) to your EU Login account, click on **Link my eID**. This option can link your national electronic identity card to your EU Login account.

Insert your national electronic identity card in the card reader and select your country. Follow the on-screen instructions to link your card.



Take note

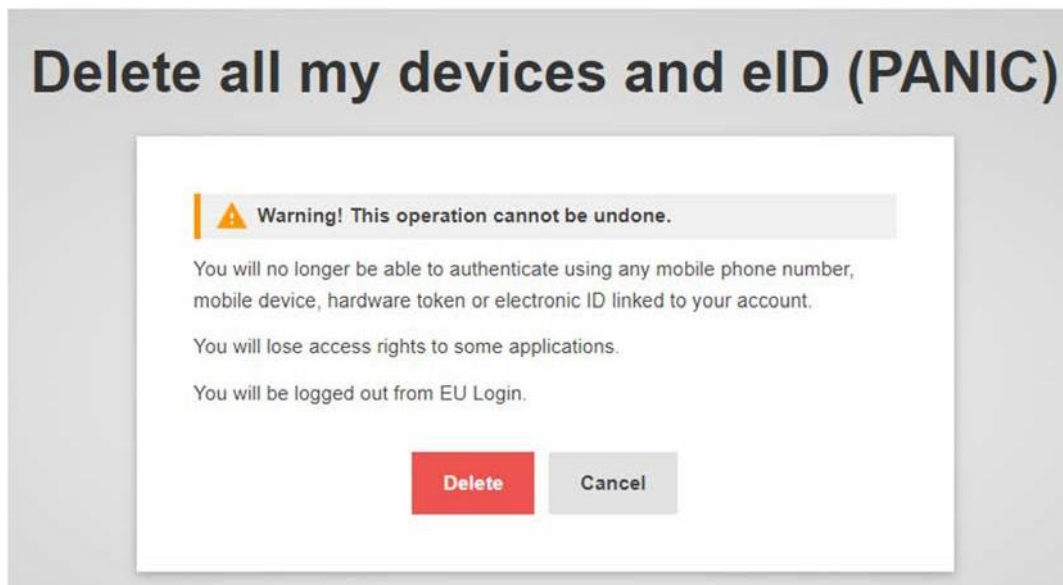
IT tools that are used in the **Erasmus+ and European Solidarity Corps** programmes **do not support the authentication using eID**.



Delete all my devices and eID (PANIC)

If you set up mobile devices and/or eID in your EU login, you have the option to **Delete all my devices and eID (PANIC)**.

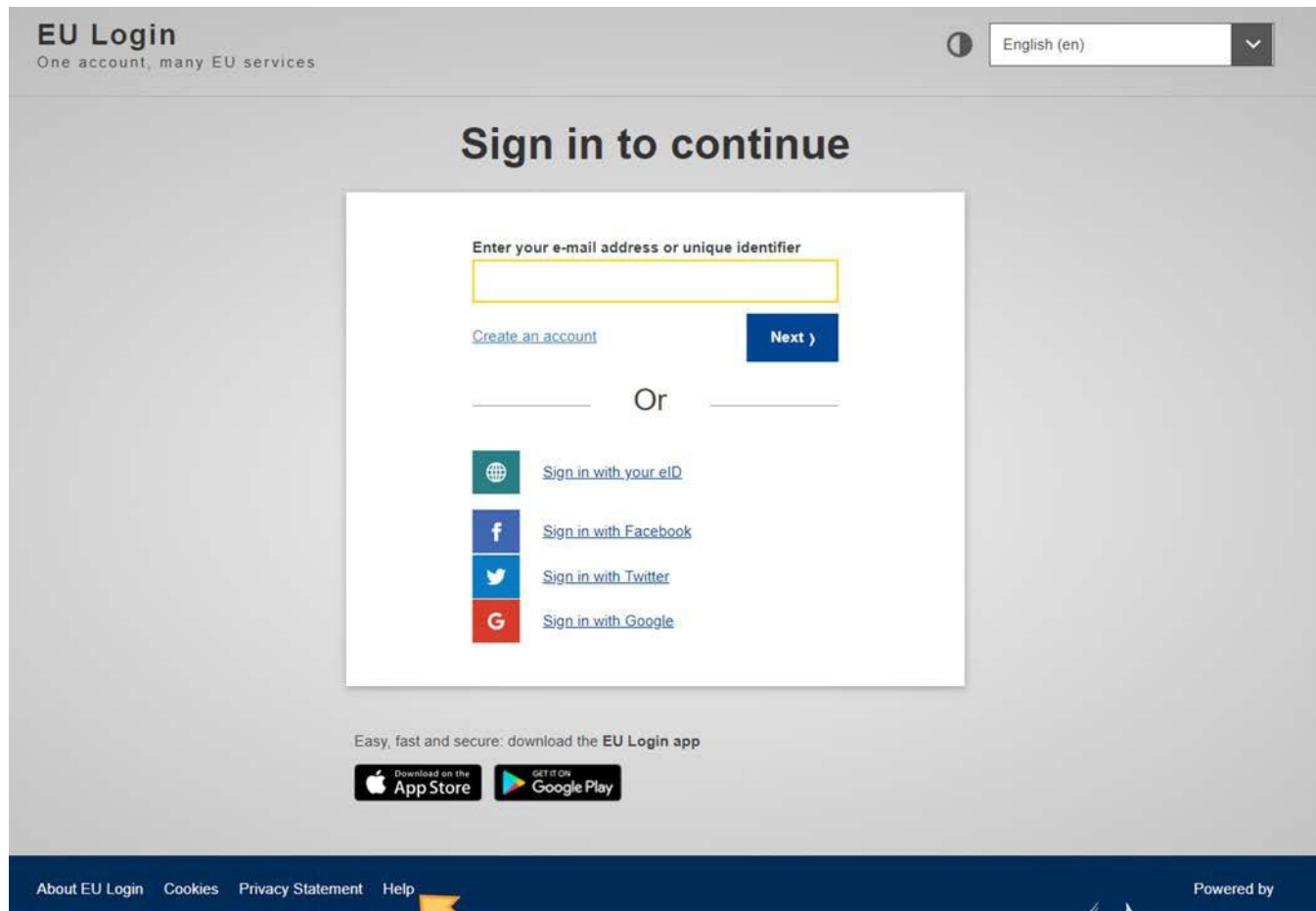
Using this option will revoke the options to authenticate using any mobile phone number, mobile device, hardware token or electronic ID linked to your account. You will lose access rights to some applications requiring the two-factor authentication. You will also be logged out from EU Login.



Help and Frequently asked questions

EU Login online help

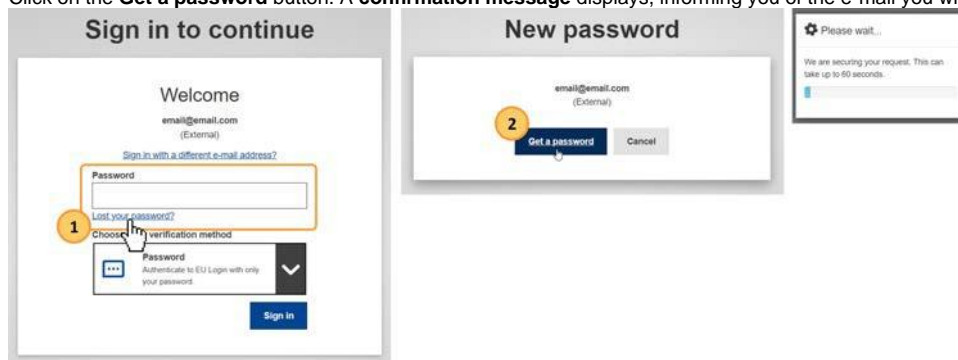
If you need help or need to check the frequently asked questions, click on the [Help](#) hyperlink at the bottom of the EU Login page.




Forgotten password?

If have forgotten your EU Login password, do the following:

1. Click the **Lost your password?** link on the login page, after you entered your e-mail address.
2. Click on the **Get a password** button. A **confirmation message** displays, informing you of the e-mail you will receive with a link to reset your password.



3. In the e-mail, click on the **link to reset your password**.
4. On the opened EU Login page, **enter your new password and confirm**.
5. Click the **Submit** button.
6. Once the password has been changed, click on the **Proceed** button to continue to sign in.

 **Take note**

You cannot reset your password if your account is locked. This happens if too many incorrect passwords are entered in a row. You will not be able to log in or reset your password during this period. The account will automatically be reactivated after 15 minutes after it was blocked.

Authentication Service <automated-notifications@nomail.ec.europa.eu>

13:59 (1 minuut geleden)



aan Anna ▾

Dear Anna Name (n00dmwx),

You have requested a reset of your EU Login password. You can do this by following the link below, preferably immediately - but a maximum of 1 day after this message was sent. You should therefore follow the link before 29/08/2023 13:59 GMT+02:00.

3

<https://webgate.ec.europa.eu/cas/init/initialisePasswordLogin.cgi?uid=n00dmwx&resetCode=qzPzxkAJMMhCl2cbJwyyRm4uOPzoBQhOkODnwoEv8BIW&loginRequestId=ECAS_LR-12741393-sINwdTPTJi8evPuHOMdbx0yneKPTZykjysWCiFS7KKx2bs1rpkge7Uw8k6sSTyjkB5oELCs6e3eBnQtZtSersW-jpJZscgsw0KA6LGzidSNIM-KyP7OSPcRV0quIW8qIXya1ldppRo3faxit12y8387Jvd7OZdYYr3aSxbrCtoAgs6MPaD9dMfy9Bi3eCUy444ym>

If you did not make or authorise this request yourself, it may be due to a typing error by another user. To cancel the request, please click [here](#).

If the above mentioned link does not work, you can copy-paste it (without any line break) in your browser address bar.

If this message was delayed or for some other reason you are unable to complete the rest of the process within 1 day, please return [here](#) to make another request.

If you suspect that someone else is trying to obtain or reset your password, please report this to your local support desk.

Sent to you by EU Login automated password reset service

New password

Please choose your new password.

email@email.com
(External)

New password

4

Confirm new password

4

5

Submit

Passwords cannot include your username and must contain at least 10 characters chosen from at least three of the following four character groups (white space permitted):

- Upper Case: A to Z
- Lower Case: a to z
- Numeric: 0 to 9
- Special Characters: !"#%&'()*+,-./:;<=>?@[\] ^ _ `{|}~

Examples: IEDUrqoen4 BefiHwTjJ2 EWGakHzBY6

[\[Generate other sample passwords\]](#)

New password

6

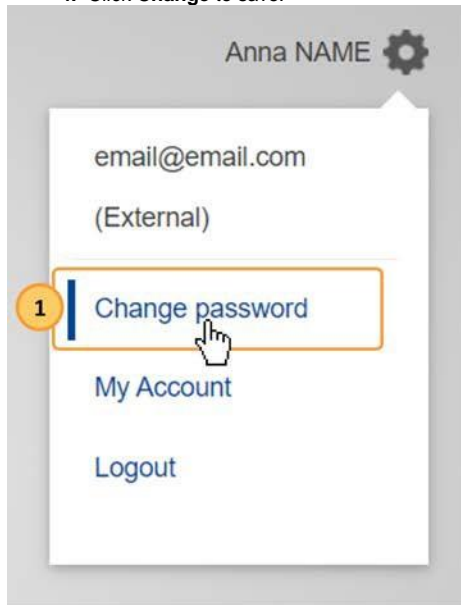
Your EU Login password was successfully changed.

Proceed

How to change my password?

To change your password:

1. From the EU login page, after you signed in, click the settings (gear) icon and select **Change Password**.
2. Enter your current EU login password.
3. Enter the new password you would like to set up in the respective fields.
4. Click **Change** to save.



Change password

email@email.com
(European Commission)

Current password

2

New password

3

Confirm new password

3

4

Passwords cannot include your username and must contain at least 10 characters chosen from at least three of the following four character groups (white space permitted):

- Upper Case: A to Z
- Lower Case: a to z
- Numeric: 0 to 9
- Special Characters: !"#%&'()*+,-./:;<=>?@[\\]^_`{|}~

Examples: I+H0Cjm,yM knWE+B2nLK MDPSacsup9

[\[Generate other sample passwords\]](#)

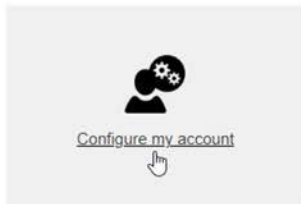
Note: Changing this password does **not** affect your Windows or Internet password.

Please take great care in entering your new password. Once you have created it, you will only be able to change or reset it yourself after 1 day.

How to change my email address in EU Login?

To change your password:

1. From the EU login page, after you signed in, click the settings (gear) icon and select **My Account**.
2. Click on **Configure my account**.
 - This action may require stronger authentication if you added second factors to your account.
3. Change your email.
4. Click on **Submit**.



Configure my account

First name

Anna

Last name

Name

E-mail

email@email.com

E-mail language

Nederlands (nl)

- I want to receive e-mail notifications.
- Warn me each time an application asks for my identity
- View my EU Login account details after logging me in
- Always require multi-factor authentication
- Enable adaptive authentication for my account

Submit

Cancel

What to do when the SMS does not arrive?

Please consult the EU Login online help for external users accessible from <https://webgate.ec.europa.eu/cas/help.html>. If the problem persists, please contact EU-LOGIN-EXTERNAL-SUPPORT@ec.europa.eu

How to delete my EU Login account?


To delete your EU Login account, click on **Delete my account** and follow the instructions. Please also notify the National Agency or DG EAC that you no longer require access to the DG EAC Tools. If possible or applicable, please mention your replacement.

Important

All access rights will be revoked and unrecoverable once deleted.



Delete my account - Confirmation required

 **Warning!** You are about to delete your EU Login account.

All access rights assigned to this account will be revoked. You will not be able to recover them.

Delete

Cancel